

lily



THE OFFICE
AWARDS
SILVER WINNER

boss
design

lily





Combining maximum support and ergonomic excellence, Lily delivers an aesthetically satisfying task chair that not only looks striking but provides a superior level of comfort.

Lily is available as a plastic back, fully upholstered back or with a mesh-back option.

Lily with a plastic back is durable and has been designed for simplicity with responsible end-of-life disassembly. This version offers maximum comfort and exceptional value for money.

lily upholstered back





|

Lily has successfully raised the benchmark in task chair seating design. The distinctive combination of precision engineering and flexible control make Lily an intuitive chair that can easily be adjusted by the individual.

|

The fully upholstered version, which is available as both a task and cashier chair, demonstrates Boss Design's expertise in upholstery and engineering to ensure longevity in the workplace and to reduce the overall cost of ownership.

lily mesh-back





The Lily range also includes an innovative mesh-back version, which offers maximum flexibility and a superior level of comfort.

The mesh-back incorporates the latest design and materials technology to deliver a chair with a robust steel rod frame and polyester knitted back.

The mesh-back features a twin-tension knit in the lumbar region to ensure maximum support.

The adaptable nature of the mesh material means that the back can be specified in a variety of colours to match or contrast with the upholstered seat.

I Lily Task Chair



The Lily collection has been designed with the user and the environment in mind. Lily encompasses easy to reach adjustable levers with highly visible graphics.

I Visitor Chair



The Lily task chair is complemented with a fully upholstered cantilever visitor chair. This chair neatly stacks four high with a moulded stacking buffer to create a stable and secure angle.



The chair features slim-line upholstery and has a plywood mono-shell construction to ensure maximum flexibility. The frame can be specified as painted silver or black, or in chrome as an option.

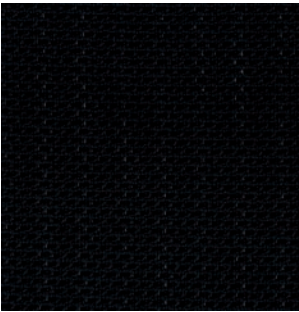
The arms are made from a durable polyurethane material and CMHR foam is standard throughout the seat and back. Optional glides are available to protect hard or polished floors.

Lily Mesh-Back Options

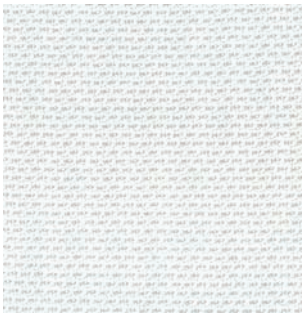
The Lily mesh-back task chair is available in ten mesh-back colour options as standard.

White mesh is available on a white frame, light grey and dark grey mesh are available on a grey frame and all other mesh-back colours are available on a black frame as standard.

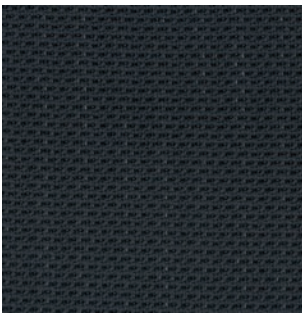
Due to the polyester yarn construction of the mesh-back other colour choices are available upon request and to special order.



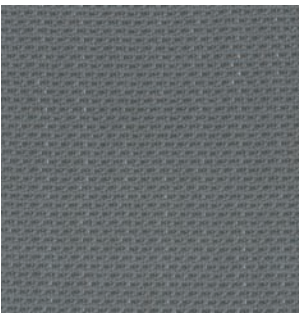
Black



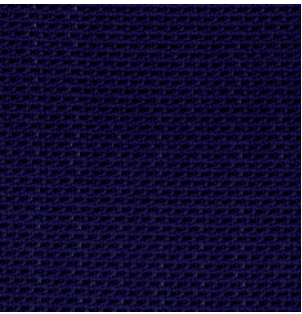
White



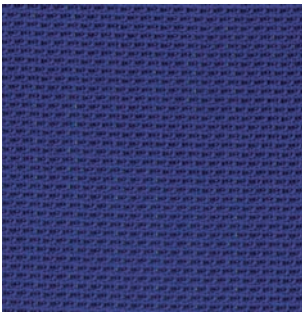
Dark Grey



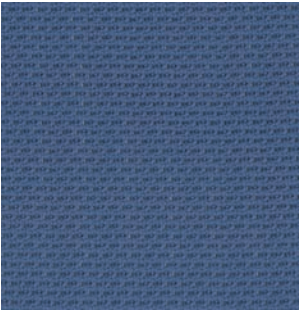
Light Grey



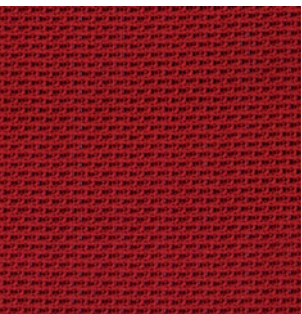
Midnight Blue



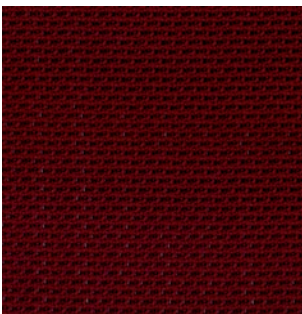
Cobalt Blue



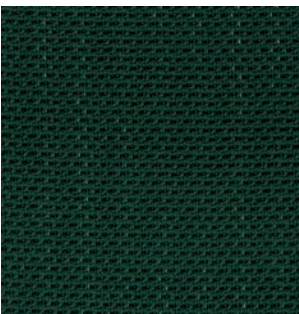
Petrol Blue



Red



Bordeaux



Green

I Lighter on the Environment

We are passionate about caring for the environment. The Lily range has been designed with the needs of the user and the environment in mind.

Presented with The Queen's Award for Sustainable Development 2009, FSC accredited and a carbon neutral company, we prefer to work with like minded suppliers who use raw materials and components obtained only from ethical sources.

Uncompromising on quality, we purchase materials with a high recycled content wherever possible. We work closely with local suppliers and constantly review our global logistics operation to ensure we minimise any negative impact on the environment.

We actively monitor the carbon footprint of our products throughout their life-cycle to ensure they meet Boss Design's environmental policy.

We partner with Greenworks to deliver our award winning end-of-life product management process. We arrange for our client's old furniture items to be collected and redistributed to charities and other good causes. Alternatively, unsuitable furniture is always broken down and recycled.

I Lily and the Environment

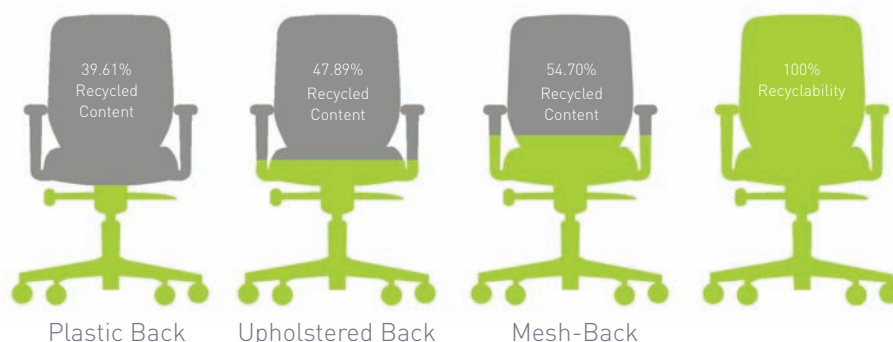
The Lily range has been designed to minimise any negative affect on the environment. During its life, components such as the upholstery and arms can be easily removed and replaced if required. At the end of its life Lily can simply be disassembled so that each component can be appropriately recycled.

The Lily mesh-back polyester material is constructed from 100% recycled yarn.



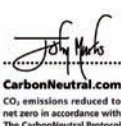
I Lily Ecological Credentials

Returnable Packaging CFC & HCFC Free
Carbon Neutral Yes
Climate Neutral BS EN ISO 14001



Statistics represent Lily chairs with arms and nylon base

CO2 per 1000 units	65.71 tonnes	55.13 tonnes	50.62 tonnes
CO2 per unit	0.07 tonnes	0.06 tonnes	0.05 tonnes





Ergonomics Excellence

Ergonomically designed workplaces, equipment and jobs aim to modify the environment to meet people's needs. By providing a wide range of adjustments, Boss task seating is designed to fit the vast majority of the population. Lily has a wide range of adjustment controls on the chair that are both easy to operate and highly visible from a seated position.

I Features

- 1) The upholstery on the seat and back of Lily can be easily removed and changed, therefore extending the product's life and significantly reducing the cost of ownership.
- 2) Moulded CMHR foams throughout the seat and back ensure maximum comfort for the user and durability for the product.
- 3) Arms can be easily adjusted in height (100mm) and are supplied with soft-touch polyurethane pads, which offer the benefit of increased comfort along with a high damage resistance. The polished aluminium arm option is supplied with sliding pads.
- 4) Arms can be supplied with width adjustment (35mm each side) to increase the suitability of the chair for a wider percentage of the corporate population.
- 5) The tension of the synchronised mechanism can be easily adjusted from the seated position using the hand-wheel on the right-hand-side of the chair. Lily incorporates a very wide range of tension adjustment to ensure that it is suitable for users from 50 to over 120kg.
- 6) The seat height is adjusted (110mm) by lifting the paddle on the right-hand-side of the chair, allowing the user to achieve the optimum position in relation to their desk and maintain a healthy posture throughout the day.
- 7) The seat is a generous size but the depth of the seat can be increased further (by up to 55mm) by pressing the button found under the right-hand-side of the seat. The waterfall edge on the front of the seat ensures maximum support and unrestricted circulation.
- 8) The synchronised mechanism can be locked in any one of five positions by using the paddle located on the right-hand-side of the chair. Alternatively, the chair can be left unlocked to promote movement in the user to help maintain a healthy posture and circulation.
- 9) 65mm diameter castors provide maximum durability and ease of movement.
- 10) All of the information referring to the benefits and adjustments of this product are featured in the user guide, which can be found in the slot under the left-hand-side of the seat.



Detail showing the left hand side of the chair.



Detail showing the right hand side of the chair.



1) Back Tilt

WHY? It is important to allow your body to remain dynamic with the chair in it's unlocked position, because a dynamic posture promotes good circulation and a healthy spine. The tension of the chair should be adjusted to suit your own weight so that your body moves freely and harmoniously with the chair rather than having to fight against it.

HOW? To unlock the back of the chair and allow it to move with your body, pull up the paddle found under the left hand side of your seat. To adjust the tension to suit your own weight pull out the knob under the right hand side of the seat and grasping it with an over-hand grip, rotate it forward to increase the tension and back to decrease the tension.



2) Back Height

WHY? It is important that the chair gives you support through the whole of your back. To do this the lumbar support on the chair must be aligned with your own lumbar region.

HOW? Lean forward and grasp the back on either side. Pull up until the pronounced lumbar support of the chair is aligned with your own lumbar region, which is just below your waist. The back will stop in any one of four positions.



3) Seat Height

WHY? To keep your thighs parallel to the floor and your elbows at a similar height to the keyboard. This helps to maintain a healthy posture with good circulation.

How? Lift the paddle located under the right hand side of your seat whilst lifting your weight out of the chair to allow the seat to raise to the desired height. To lower the height, lift the paddle again leaving your body weight on the seat.



4) Seat Slide

WHY? If your seat depth is too long you could compromise the circulation in your lower legs as well as being unable to make effective use of the back rest and will adopt a posture with a rounded spine. If it is too short, you will increase the pressure on your thighs. Ideally the front edge of the seat should be 5cm from the back of your calves.

How? Push the button on the right hand side of the seat. Keep your weight on the seat pad and move forward. Release the button to lock the seat.



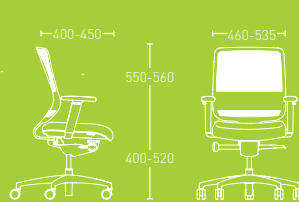
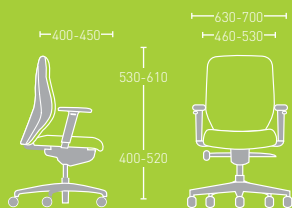
5) Arm Pad Adjustment

WHY? Forearms must be allowed to rest flat on the arm pads, allowing your shoulders to relax in order to eliminate some of the tension in your upper body.

HOW? Lift the buttons on the outside of the arm risers to raise and lower the arms. Ensure that both arm pads are the same height. The width can be adjusted using the 'quick-release' handles under the arm supports.

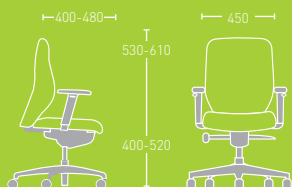
Lily's host of innovative design features, bespoke tooling and the integration of industry-leading adjustment mechanisms make this a chair that is setting new industry standards for ergonomics, comfort, durability and flexibility.

Plastic back



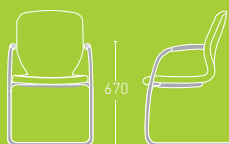
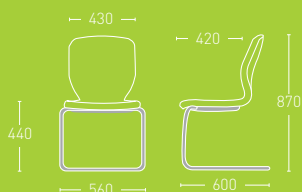
Mesh-back

Fully upholstered back



Fully upholstered cashier

Cantilever



Specifications

Standard Feature ☐ Optional Feature ☒

Task Chair features

Thoracic support	<input type="checkbox"/>
Synchronised mechanism	<input type="checkbox"/>
A-Synchronised mechanism	<input checked="" type="checkbox"/>
Height adjustable arms	<input checked="" type="checkbox"/>
Width adjustable arms	<input checked="" type="checkbox"/>
Sliding arm pads	<input checked="" type="checkbox"/>
Rotating arm pads	<input checked="" type="checkbox"/>
Polished aluminium arms	<input checked="" type="checkbox"/>
Sliding seat	<input checked="" type="checkbox"/>
Black nylon base	<input type="checkbox"/>
Painted black or silver base	<input checked="" type="checkbox"/>
Polished aluminium base	<input checked="" type="checkbox"/>
Black 65mm castors	<input type="checkbox"/>
Silver 65mm castors	<input checked="" type="checkbox"/>

Cantilever Visitor Chair features

Black frame	<input type="checkbox"/>
Silver RAL 9006 frame	<input checked="" type="checkbox"/>
Polished frame	<input checked="" type="checkbox"/>
PU arm sleeve	<input type="checkbox"/>
Glides	<input checked="" type="checkbox"/>

boss
design



Boss Design Ltd

www.boss-design.co.uk
sales@boss-design.co.uk

Head Office

Boss Drive
Dudley
DY2 8SZ
United Kingdom

T: +44 (0) 1384 455 570
F: +44 (0) 1384 241 628

London Showroom

Charterhouse Square
7 Clerkenwell Road
London
EC1M 5PA

T: +44 (0) 20 7253 0364
F: +44 (0) 20 7608 0160